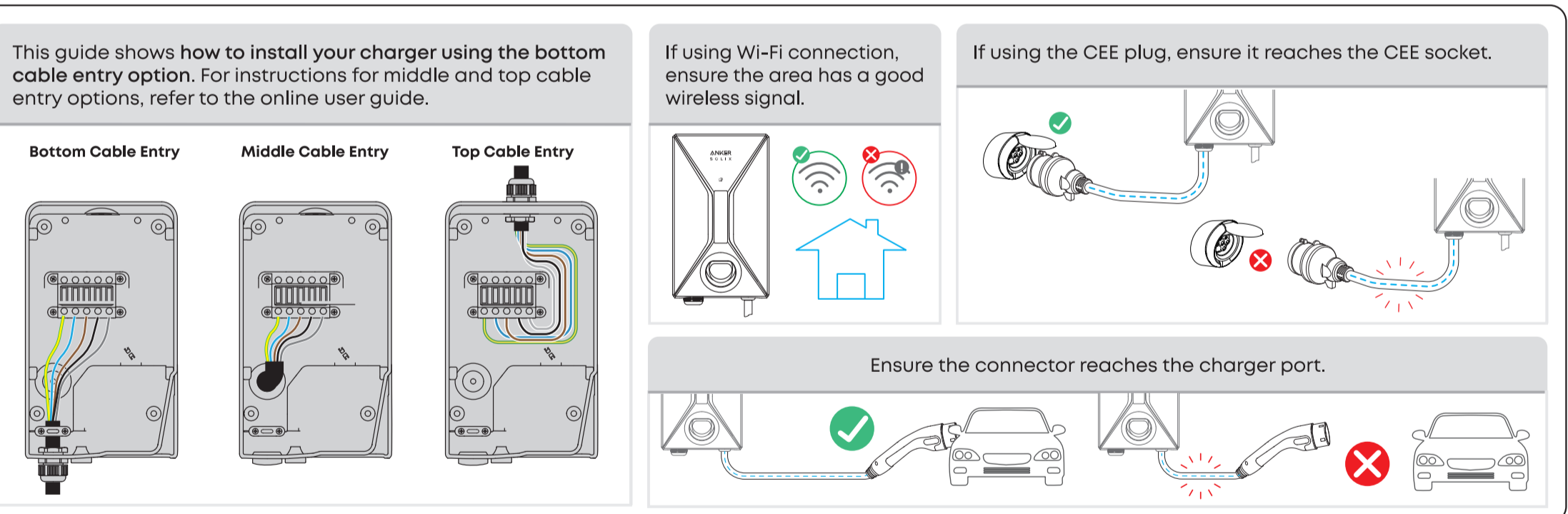
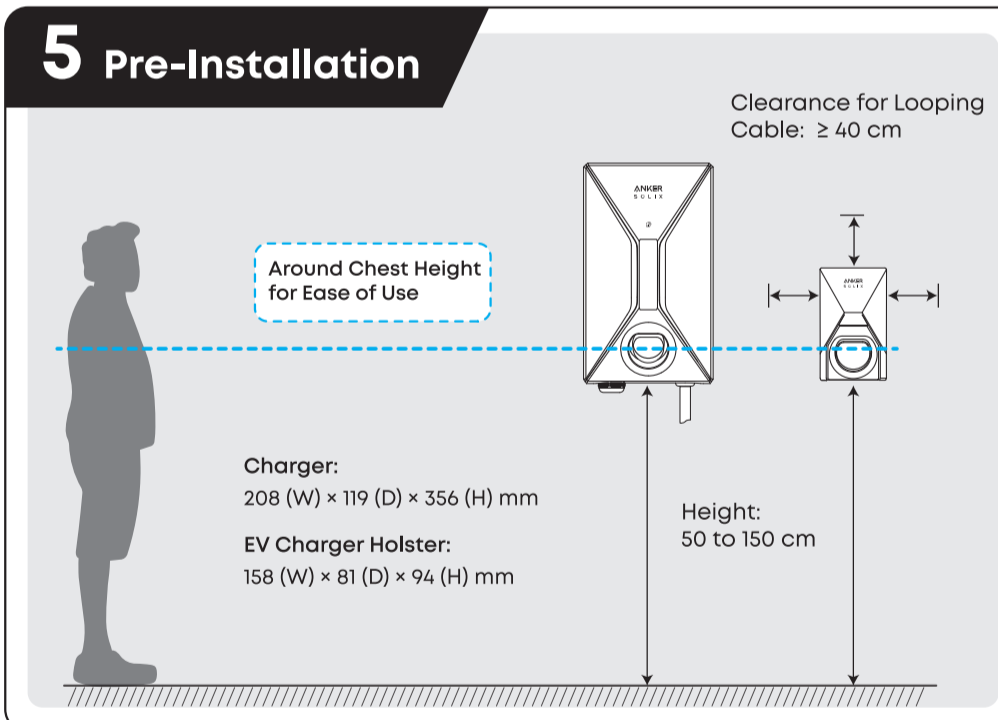
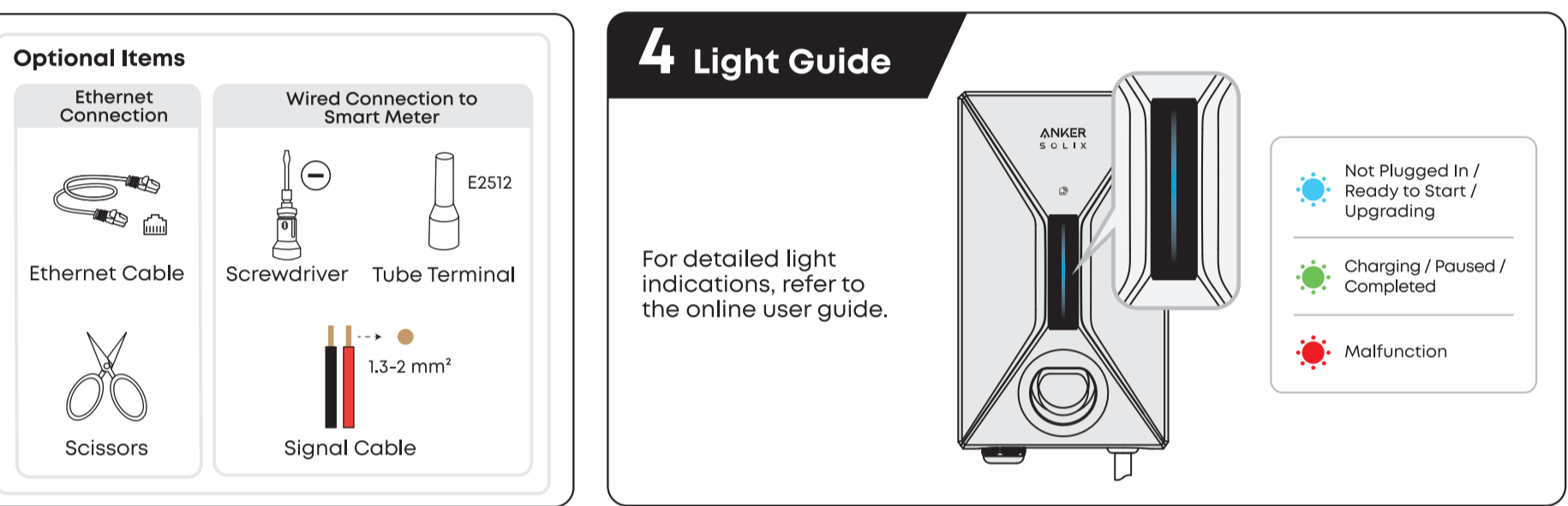
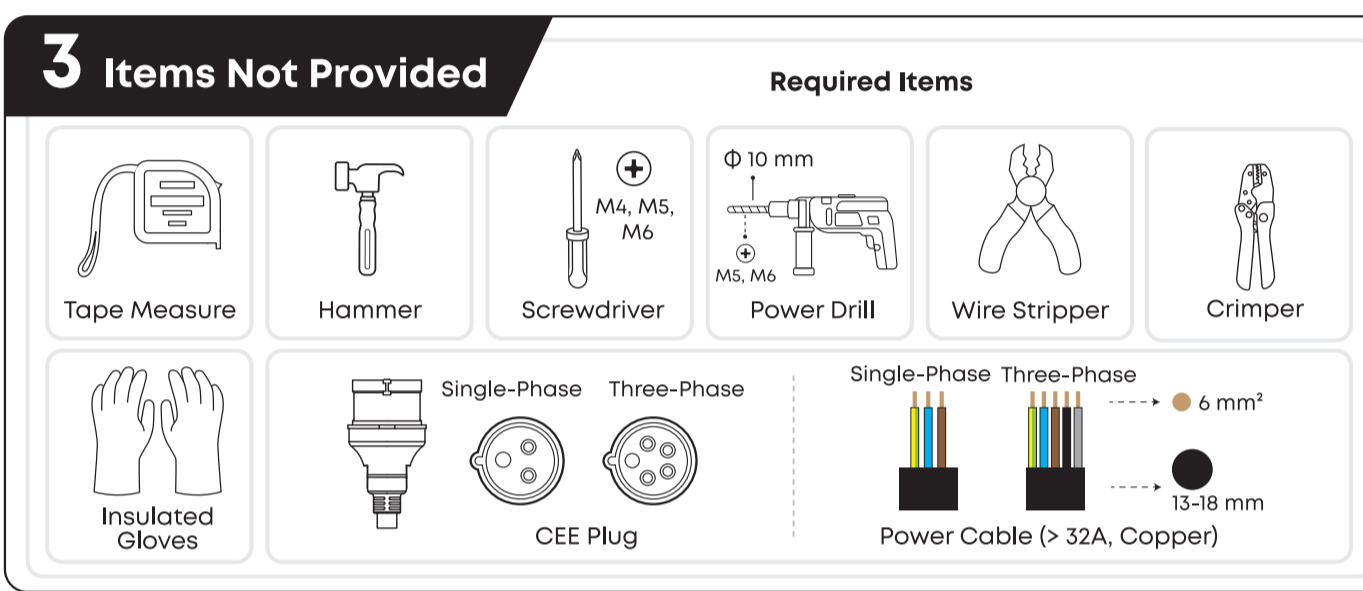
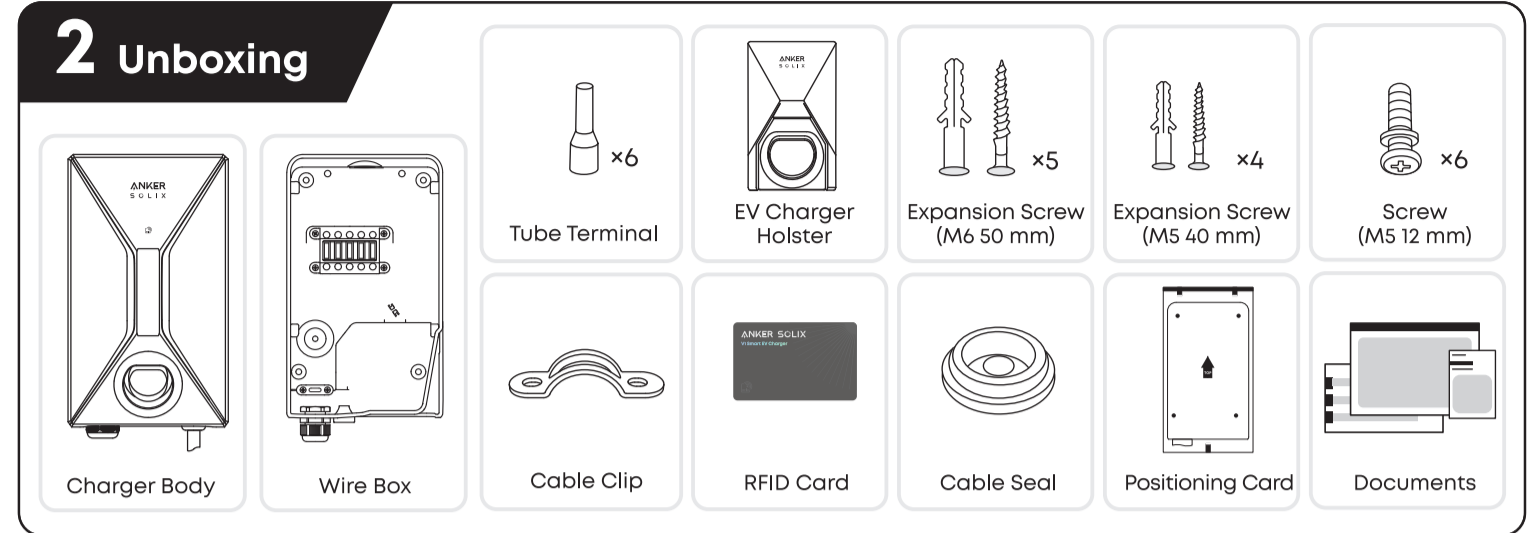
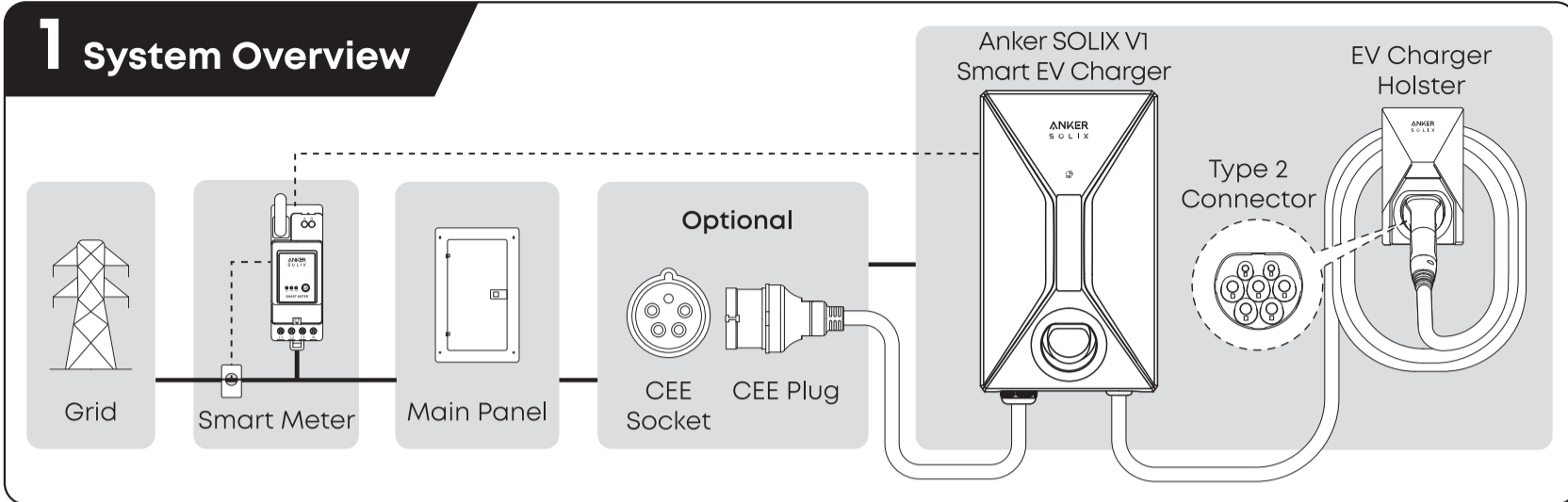




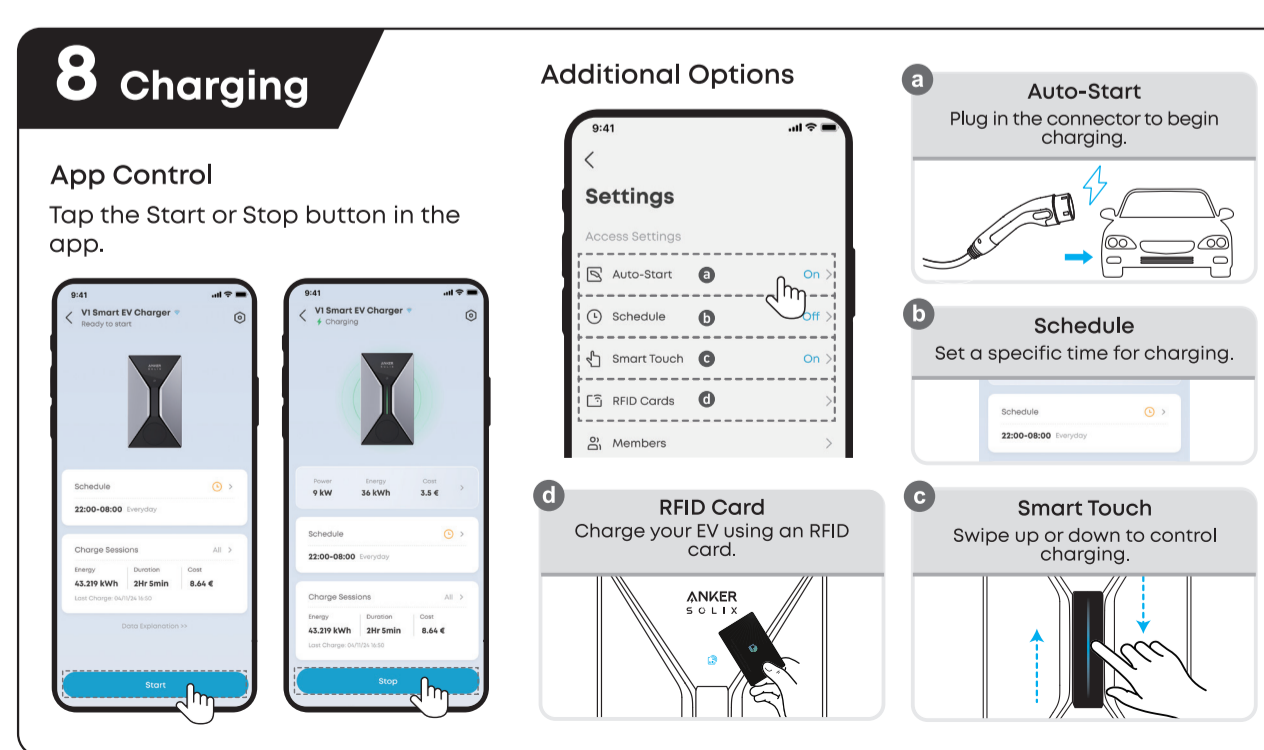
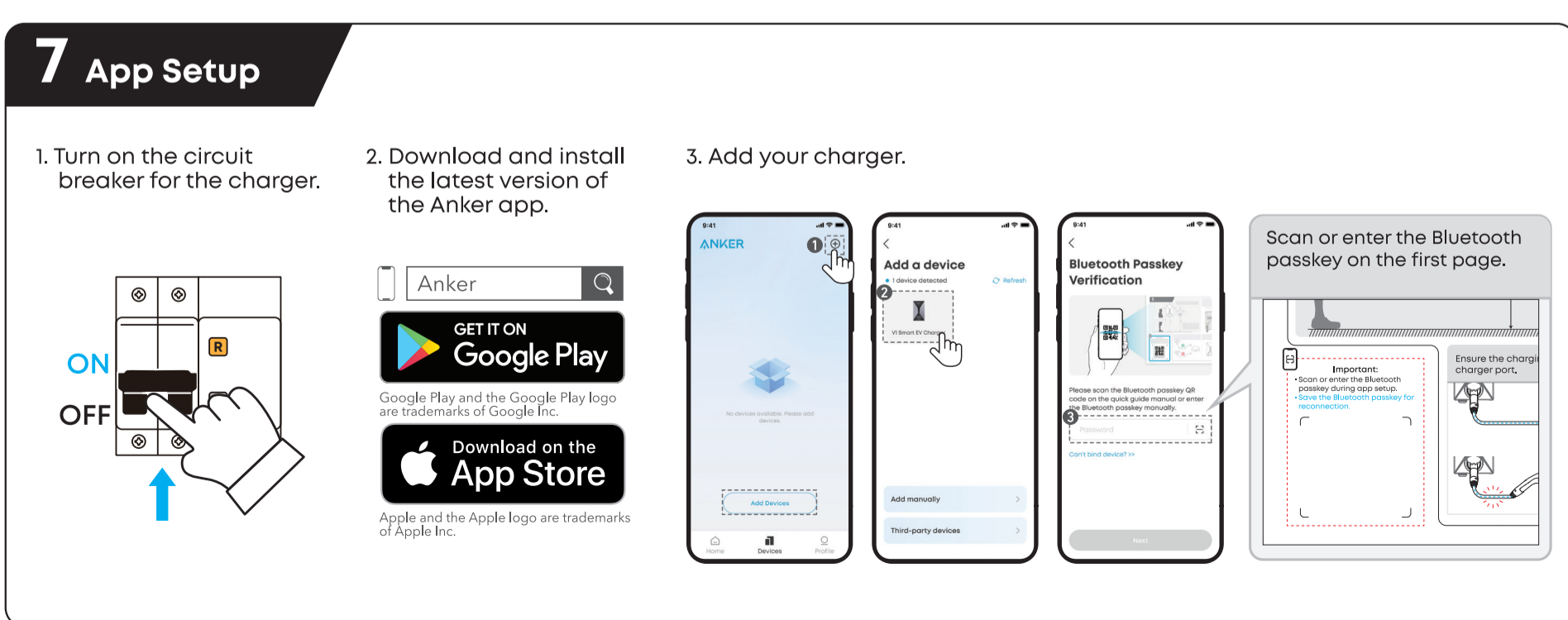
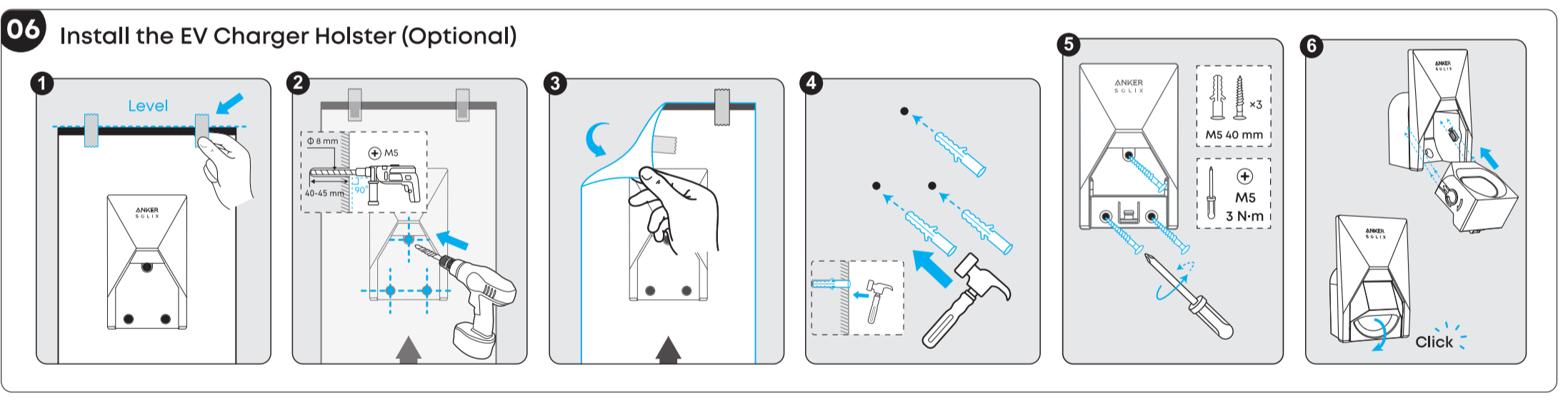
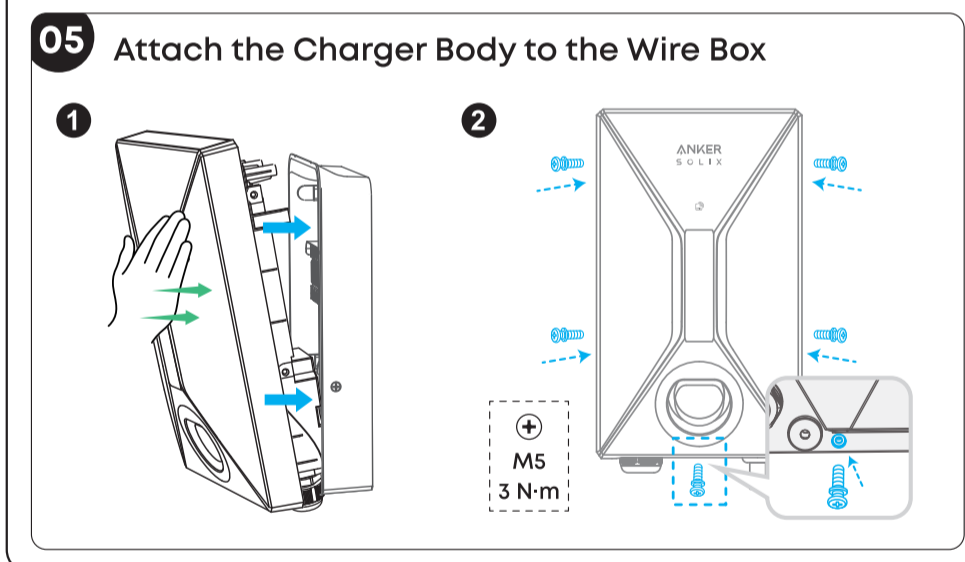
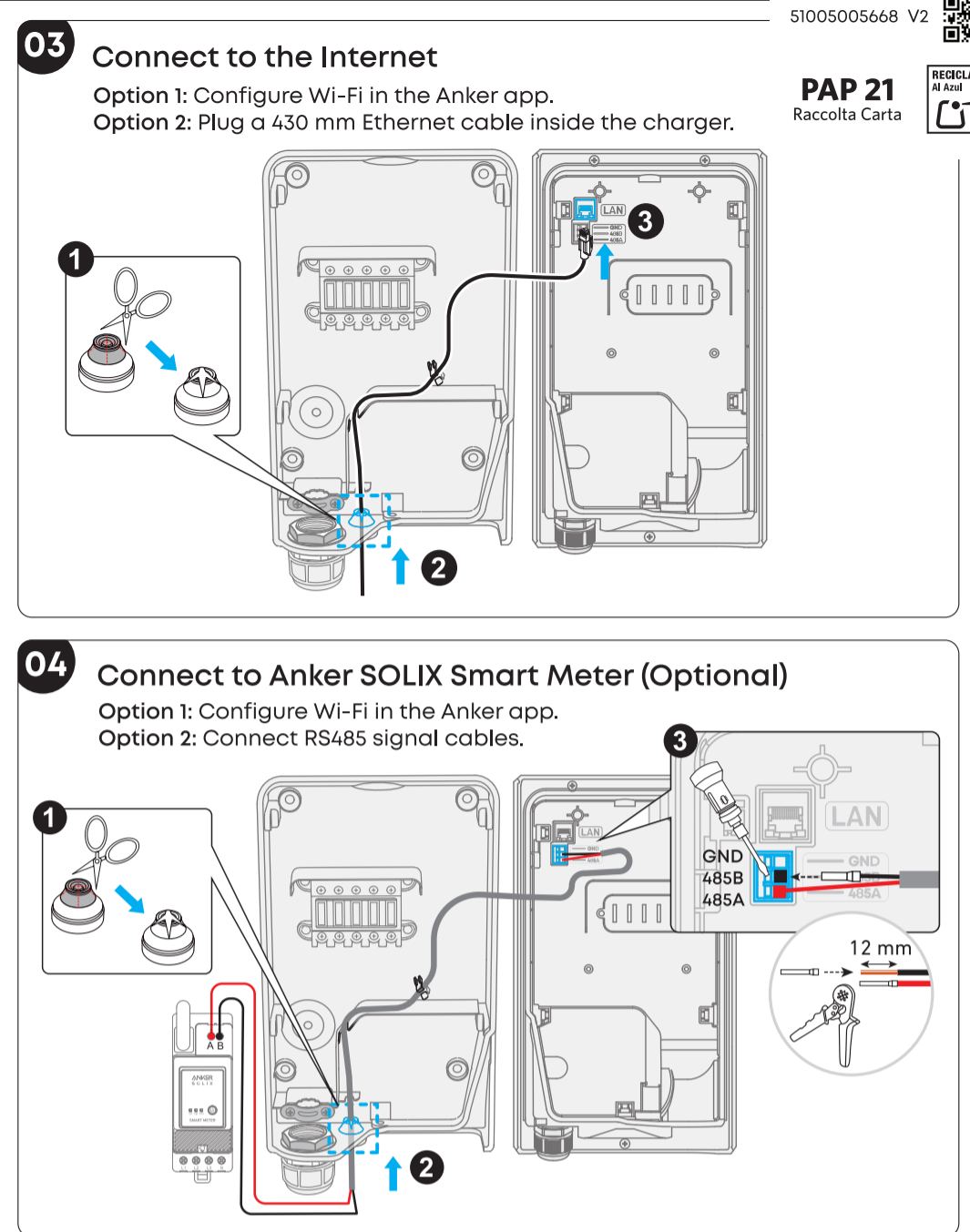
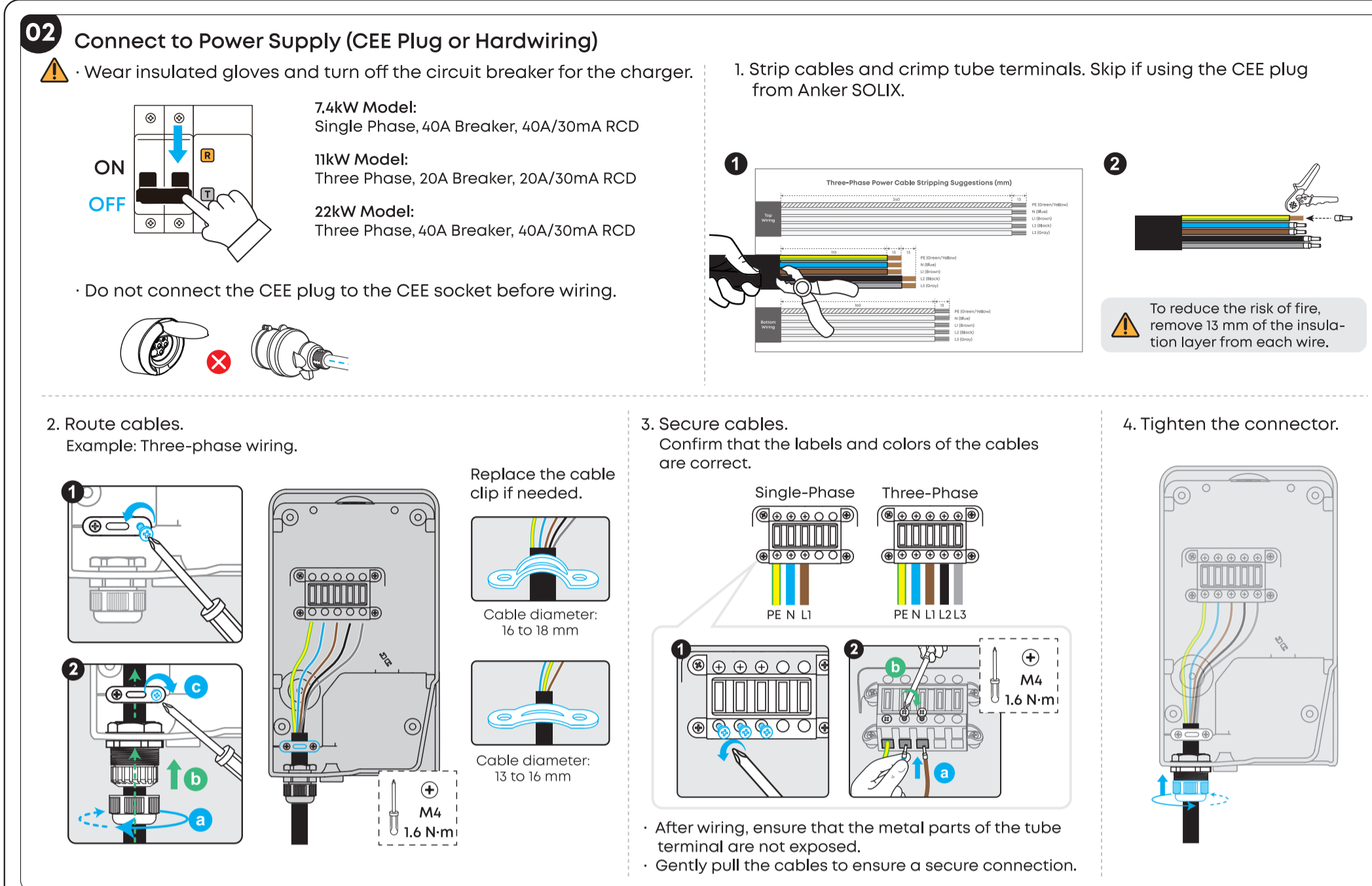
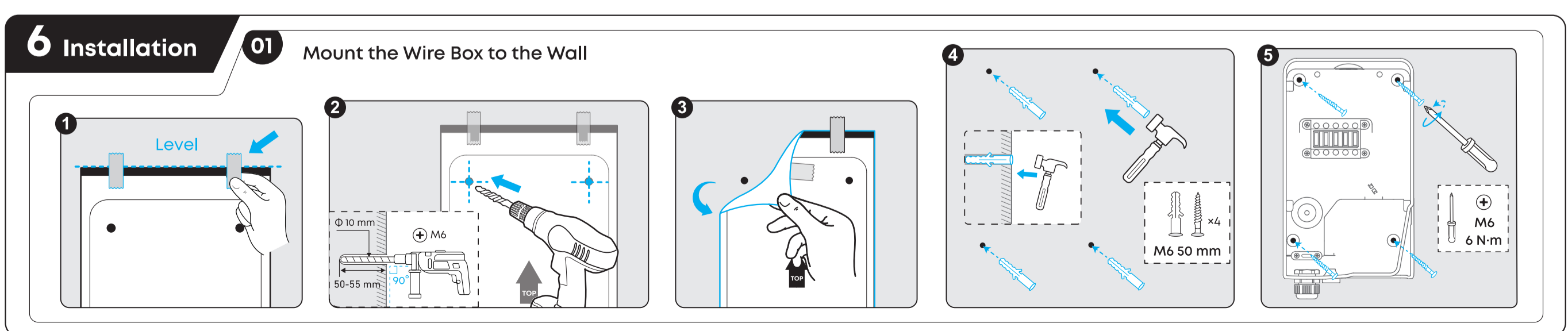
For User Guide / App / Support

support@anker.com (UK) +44(0) 1616 056 301
uk.support@anker.com (UK) (DE) +49 (800) 000 2522



Important:

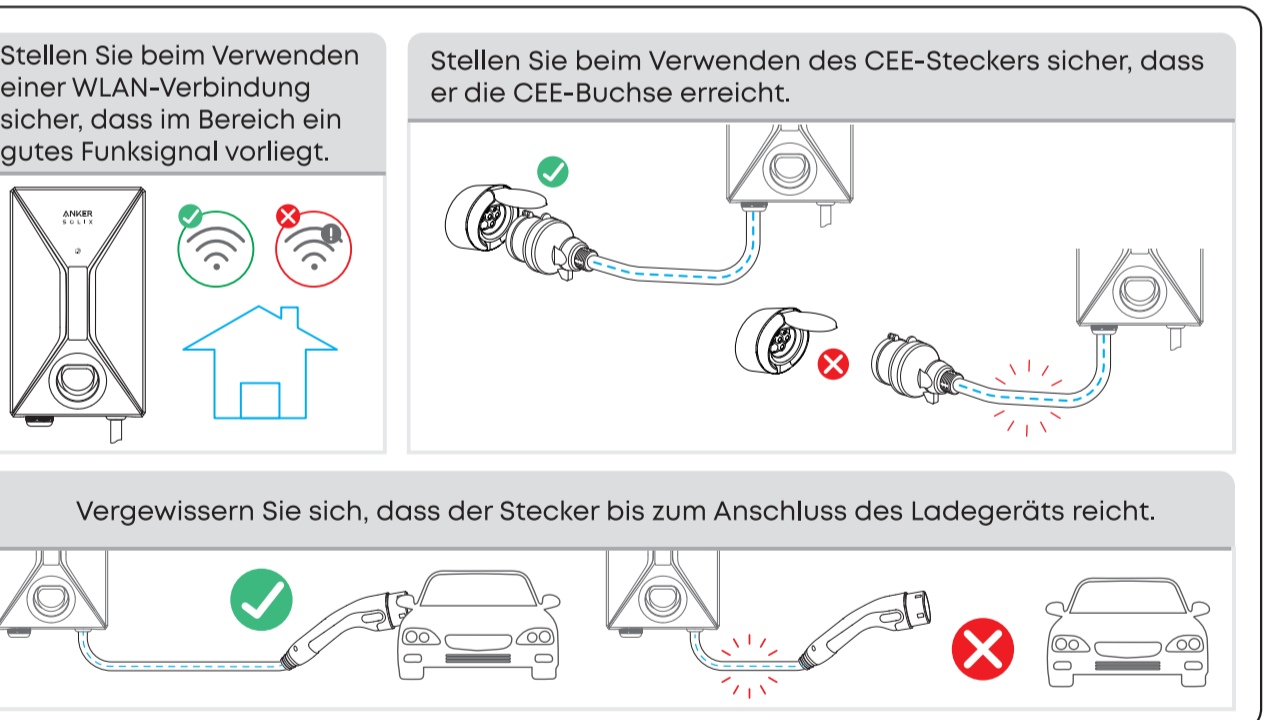
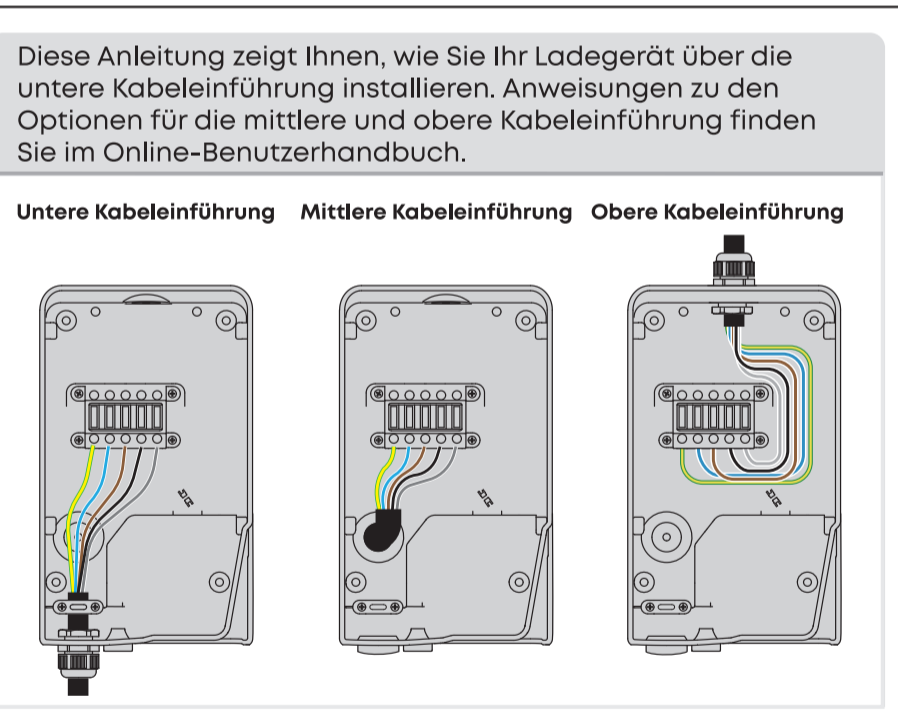
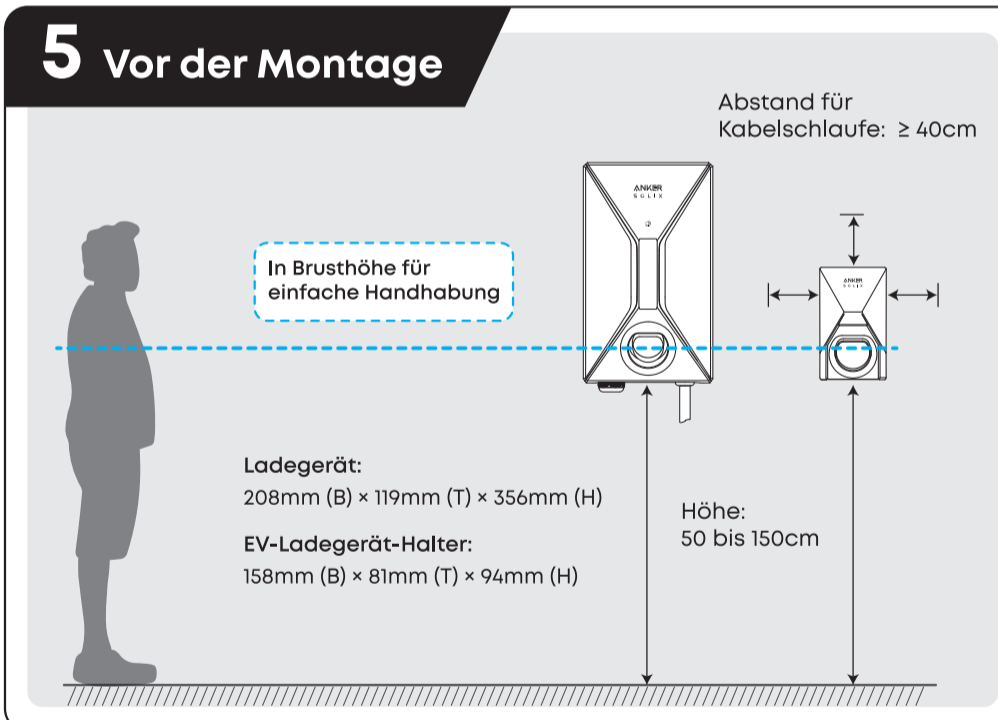
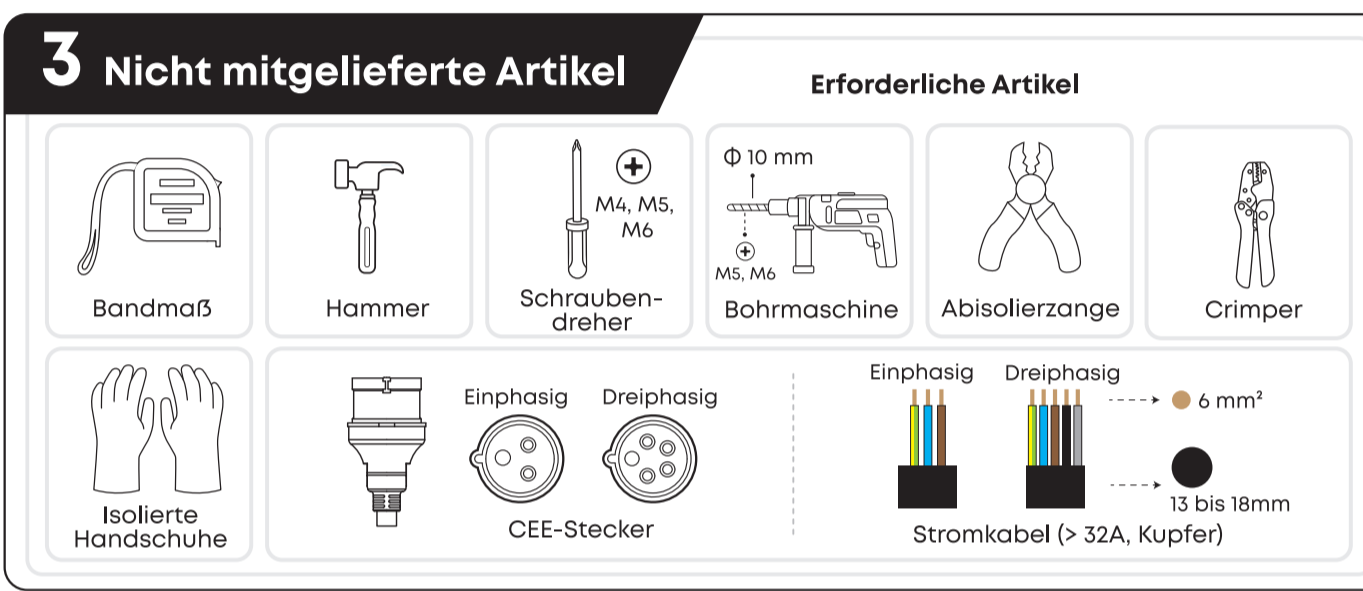
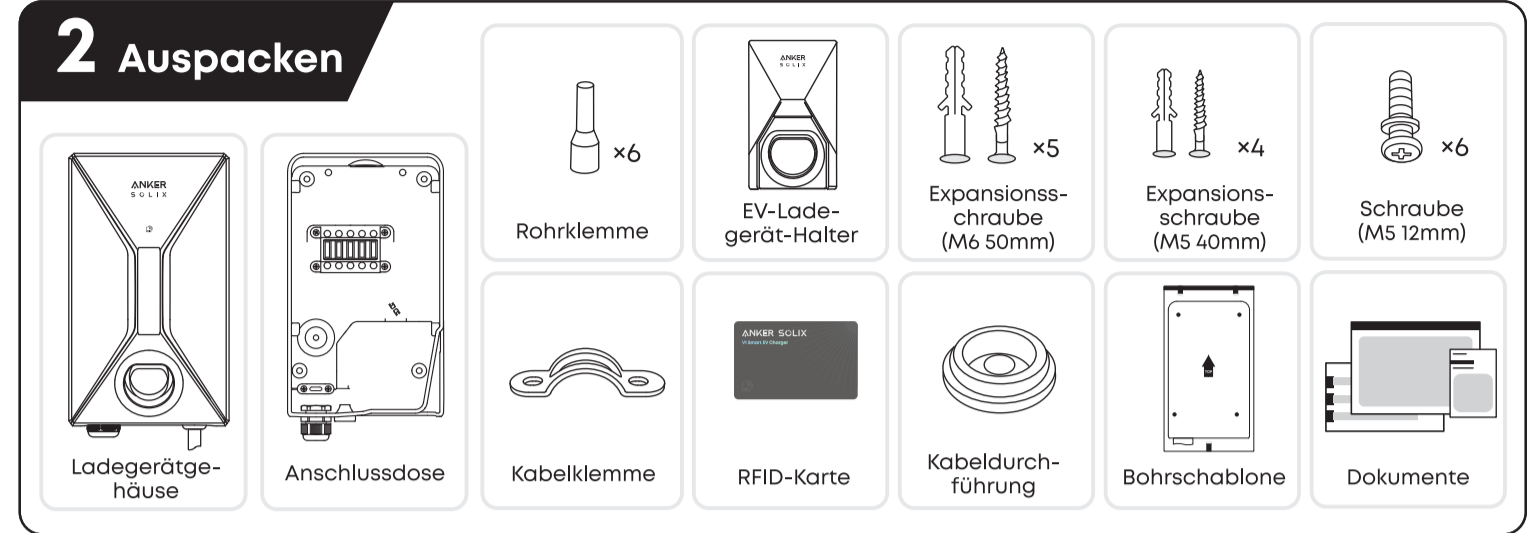
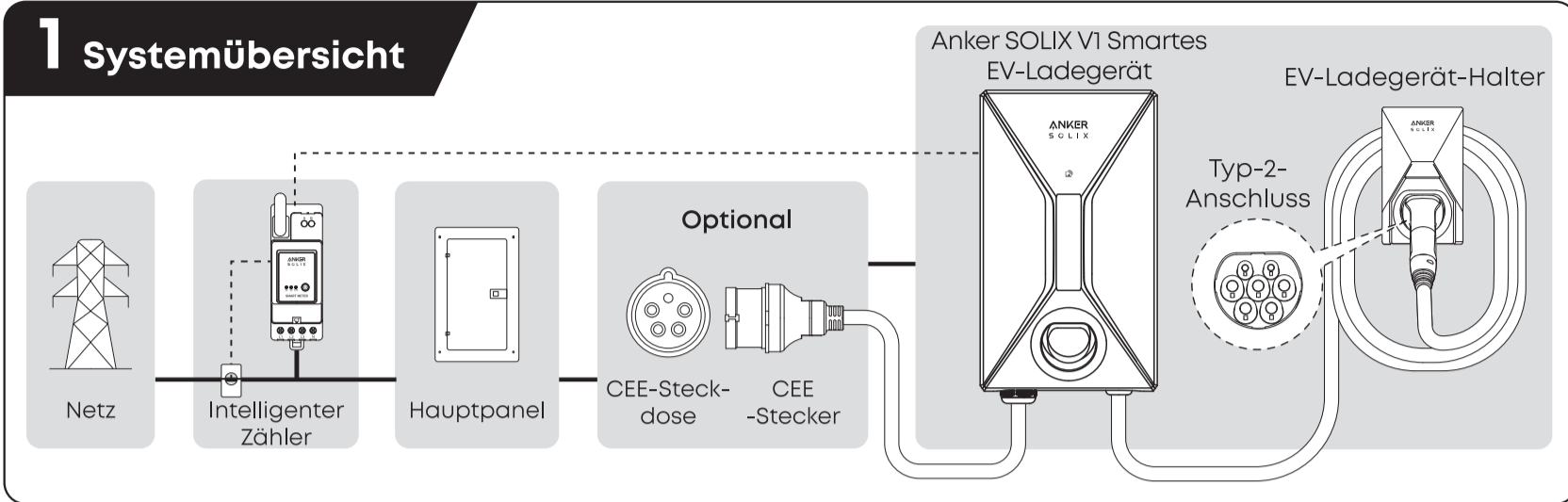
- Scan or enter the Bluetooth passkey during app setup.
- Save the Bluetooth passkey for reconnection.





Zum Benutzerhandbuch, zur App und Unterstützung

support@anker.com (UK) | +44(0) 1616 056 301 (DE) | +49 (000) 000 2522



Achtung:

- Scannen und geben Sie den Bluetooth-Passkey während der Einrichtung der App ein.
- Speichern Sie den Bluetooth-Passkey für eine erneute Verbindung.

Sie finden den Bluetooth-Passkey auf der ersten Seite der Anleitung auf Englisch.

